

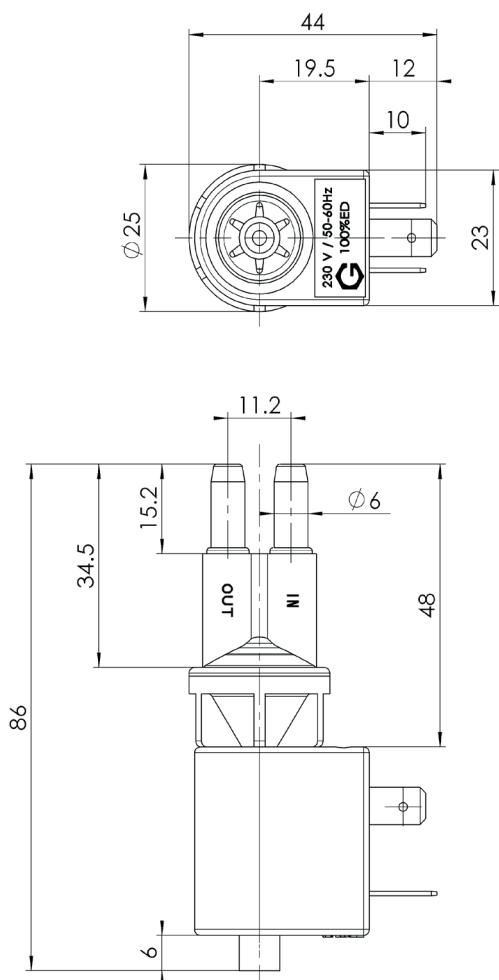
SOLENOID PUMP

# EDS03

TECHNICAL DATA



## DIMENSIONS



## NOMINAL RATED DATA

Pressure (no flow)	≥ 0.25[bar]
Open flow	≥ 7[l/h]
Viscosity range	1...600[mm <sup>2</sup> /s]
Filter	Mesh 100
Voltages	230[V] (12, 24, 110V)
Frequencies	50, 60[Hz]
Electrical connection	2 x 6.3 x 0.8 [mm]
Power	18[W]
Weight	~90[g]
Temperature	1...50[°C]
Insulation	Class F Class 1
	100% ED / 20 [°C]

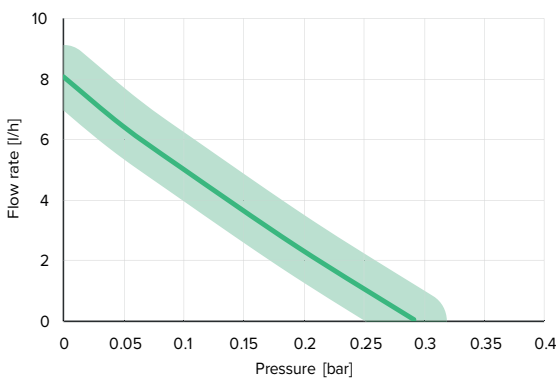
**SOLENOID PUMP**

**EDS03 230V**

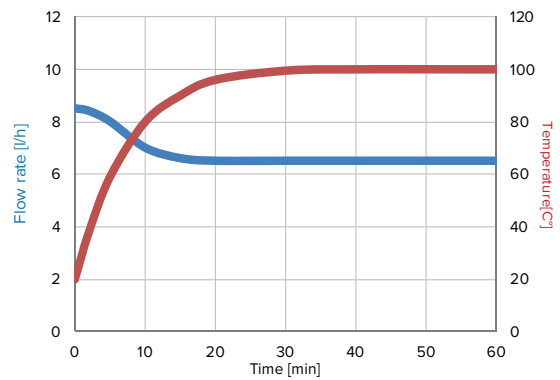
**TECHNICAL DATA**



**PERFORMANCES**



**OPEN FLOW & TEMPERATURE**



Tested with 20°C of water at ambient temperature

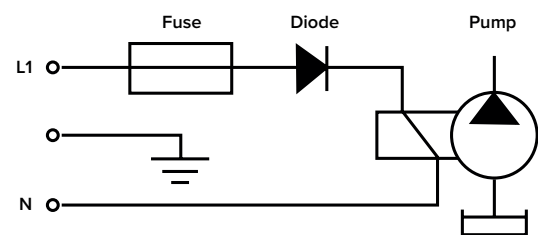
**ACCESSORIES**



Heating sink

Large choice of materials & options

**ELECTRIC WIRING DIAGRAM**



Please refer to instruction manual for more installation details. For more information, visit our website : [www.gotec.ch](http://www.gotec.ch)

Certifications

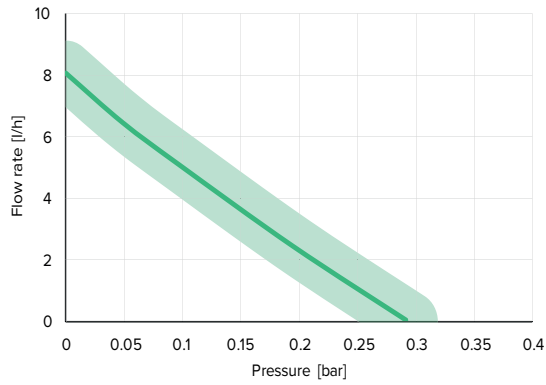


**SOLENOID PUMP**  
**EDS03 24VAC**

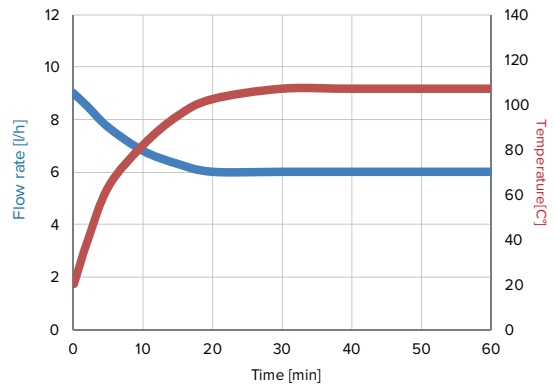
**TECHNICAL DATA**



**PERFORMANCES**



**OPEN FLOW & TEMPERATURE**



Tested with 20°C of water at ambient temperature

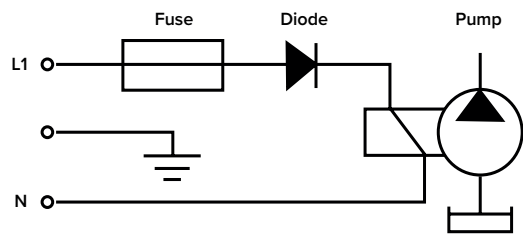
**ACCESSORIES**



Heating sink

Large choice of materials & options

**ELECTRIC WIRING DIAGRAM**



Please refer to instruction manual for more installation details. For more information, visit our website : [www.gotec.ch](http://www.gotec.ch)

**Certifications**

